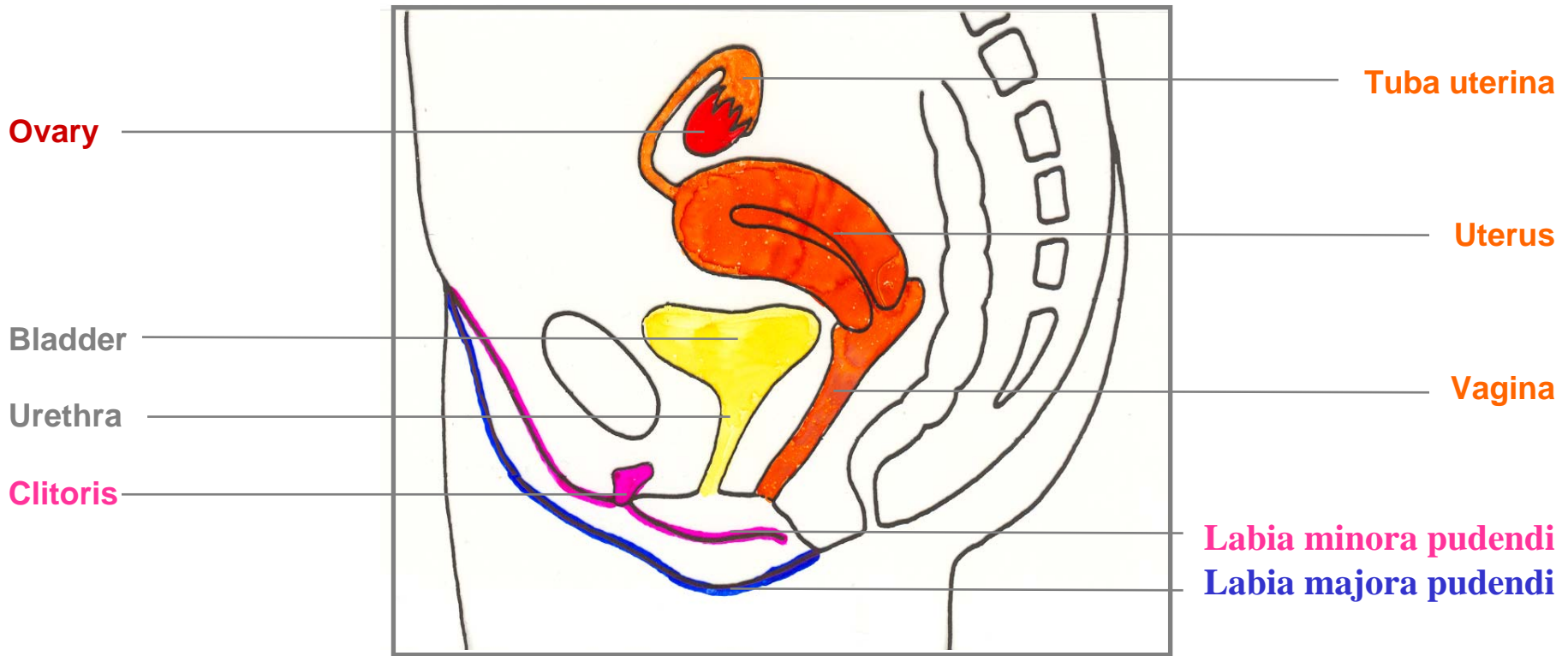
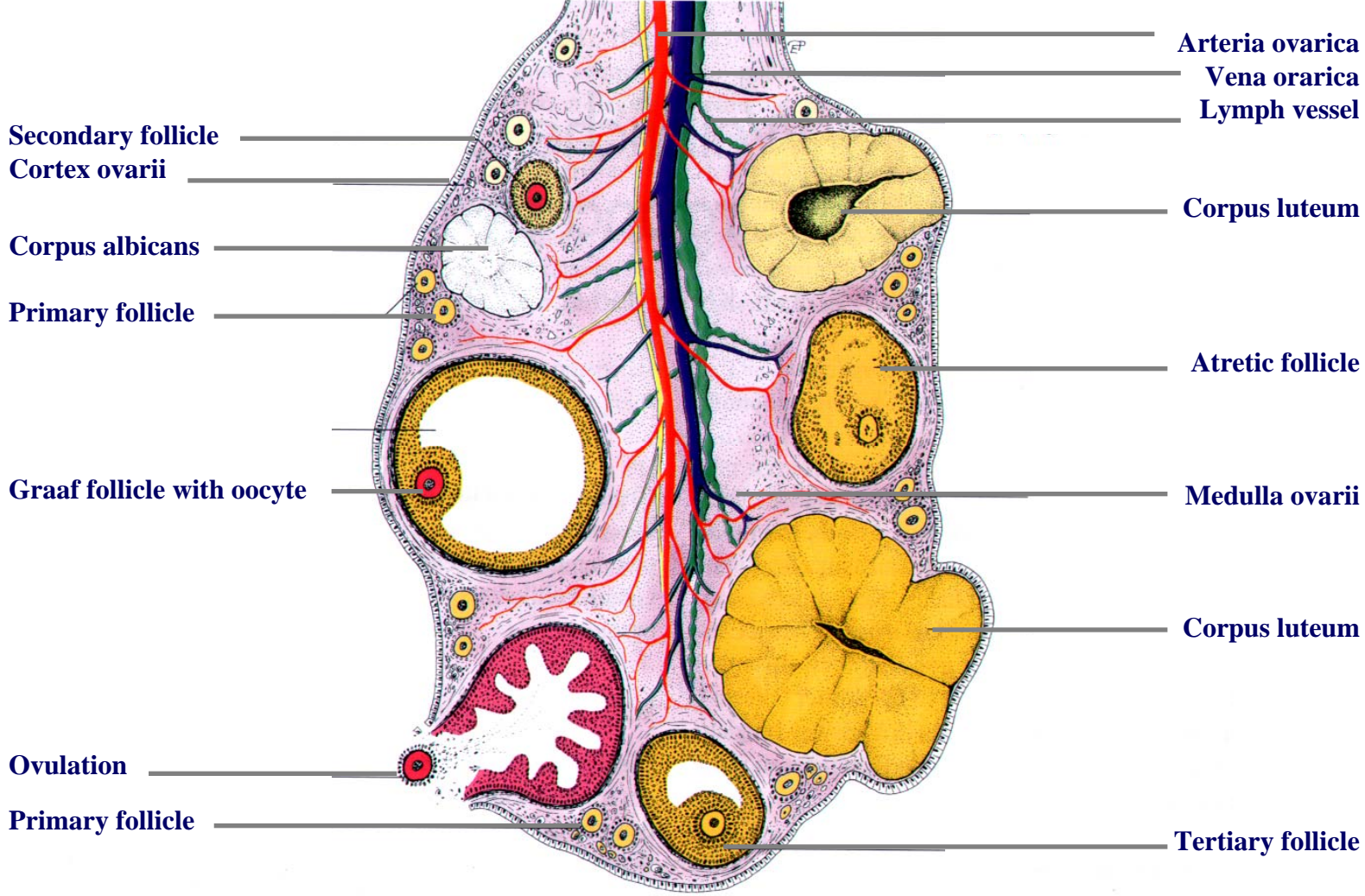


FEMALE REPRODUCTIVE ORGANS



Female mammals have two ovaries which are components of both the reproductive and the endocrine system. Therefore, the two main functions of the ovaries are: producing eggs and female sex hormones (e.g. estrogen and progesterone).

OVARY



Secondary follicle
Cortex ovarii

Corpus albicans

Primary follicle

Graaf follicle with oocyte

Ovulation

Primary follicle

Arteria ovarica
Vena ovarica
Lymph vessel

Corpus luteum

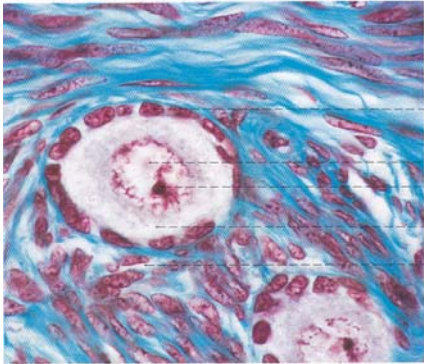
Atretic follicle

Medulla ovarii

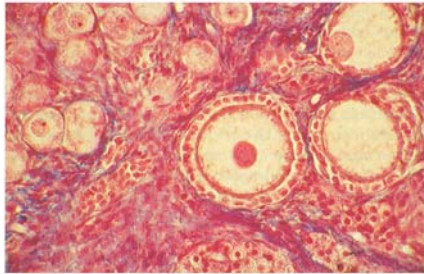
Corpus luteum

Tertiary follicle

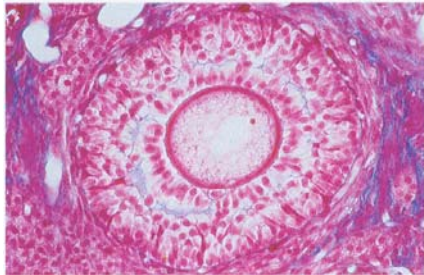
OVARY



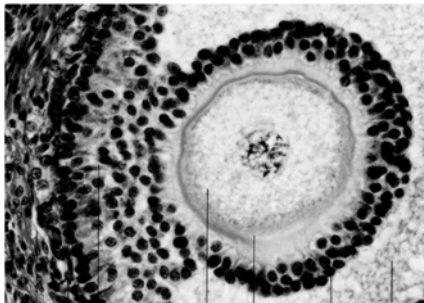
- ← **Primordial follicle** (30-50 μm)
Primary oocyte with epithelial cells



- ← **Primary follicle** (50-80 μm)
Primary oocyte with uni-layered epithelium
Zona pellucida



- ← **Secondary follicle** (80-100 μm)
Primary oocyte with multi-layered epithelium
Stroma ovarii → Theca folliculi

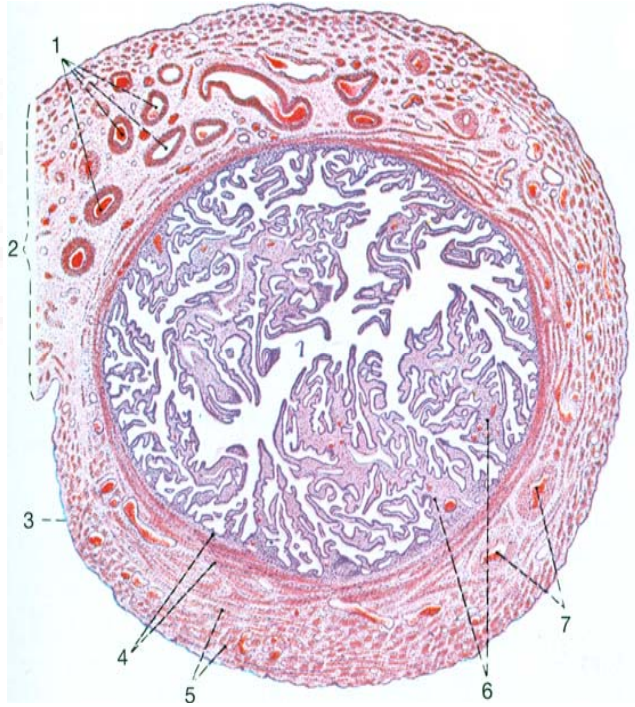
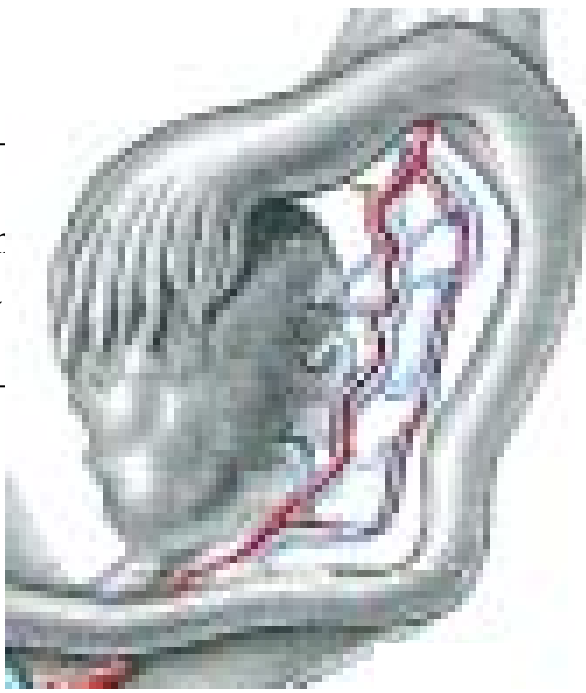


- ← **Tertiary follicle** (100-120 μm)
Primary oocyte in cumulus oophorus
Theca externa and interna, Antrum
- **Graaf follicle** (120-130 μm)
Secondary oocyte in corona radiata

TUBA UTERINA



Ampulla —
 Infundibulur
 with fimbria
 Isthmus —



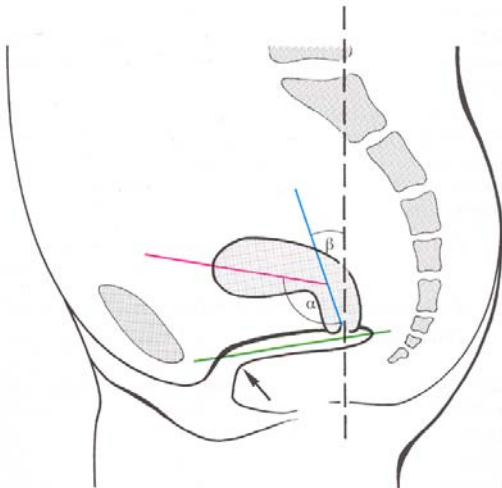
Multi-layered
 epithelium with
 kinocilia

- 1 Arteria
- 2 Mesosalpinx
- 3 Tunica serosa
- 4 + 5 Tunica muscularis
- 6 Plicae tubariae
- 7 Vena

UTERUS



(Ante)Versio
(Ante)Flexio



Fundus uteri

Cavitas uteri

Corpus uteri

Canalis isthmi

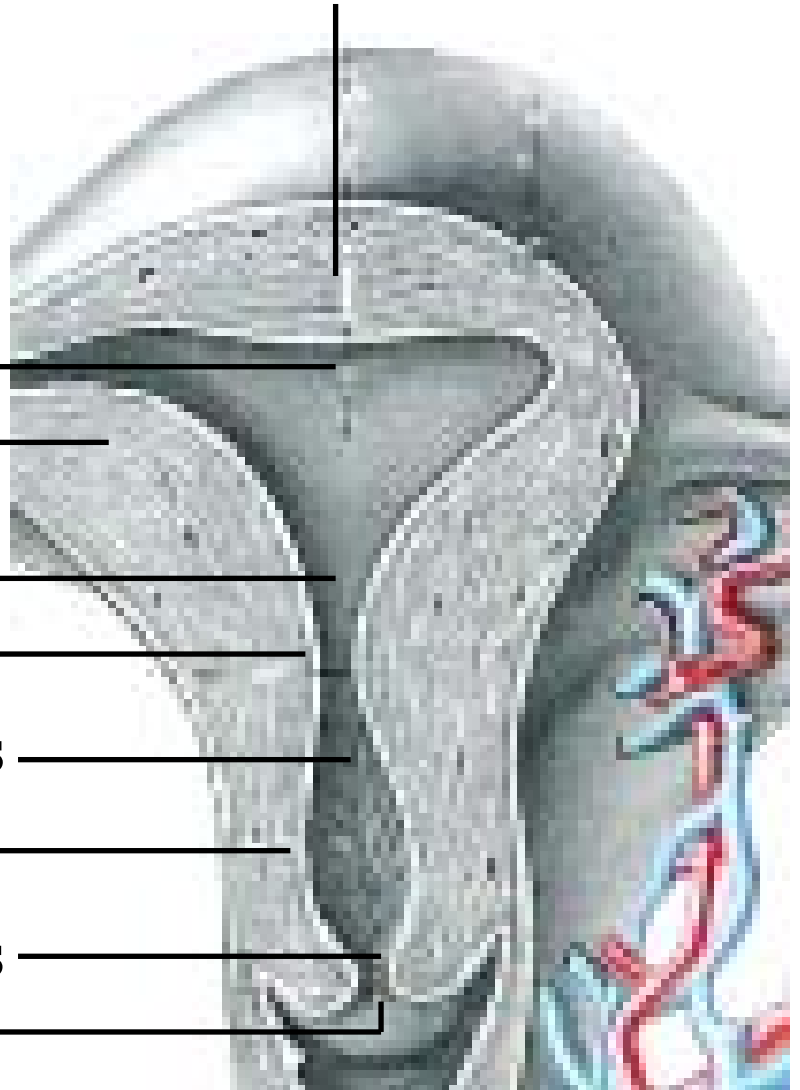
Isthmus uteri

Canalis cervicis

Cervix uteri

Portio vaginalis

Ostium uteri





UTERUS

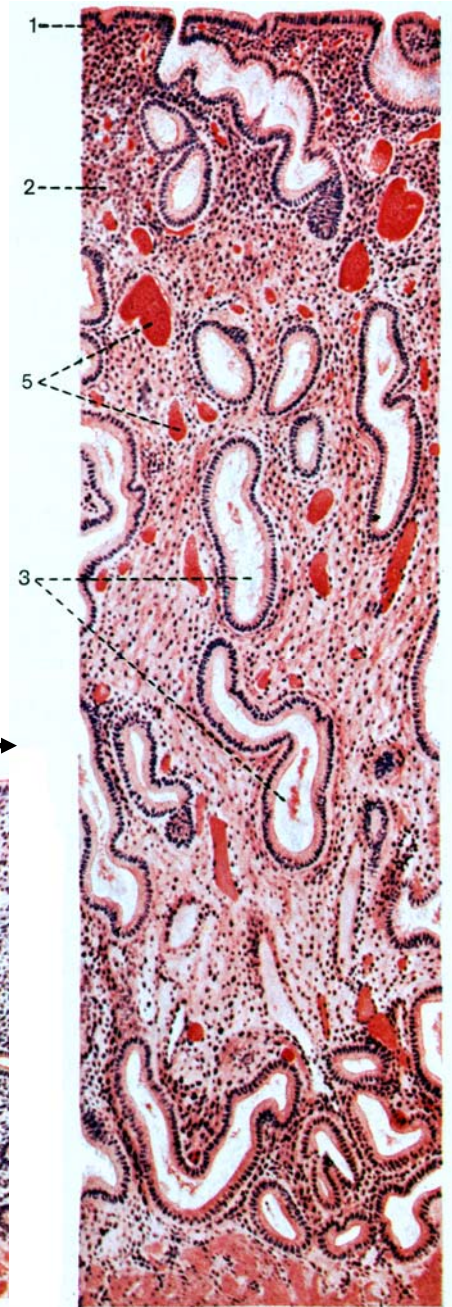
ENDOMETRIUM

- 1: Epithelium
- 2: Lamina propria mucosae
- 3: Glandulae uterinae
- 4: Tunica muscularis
- 5: Arteriae spirales

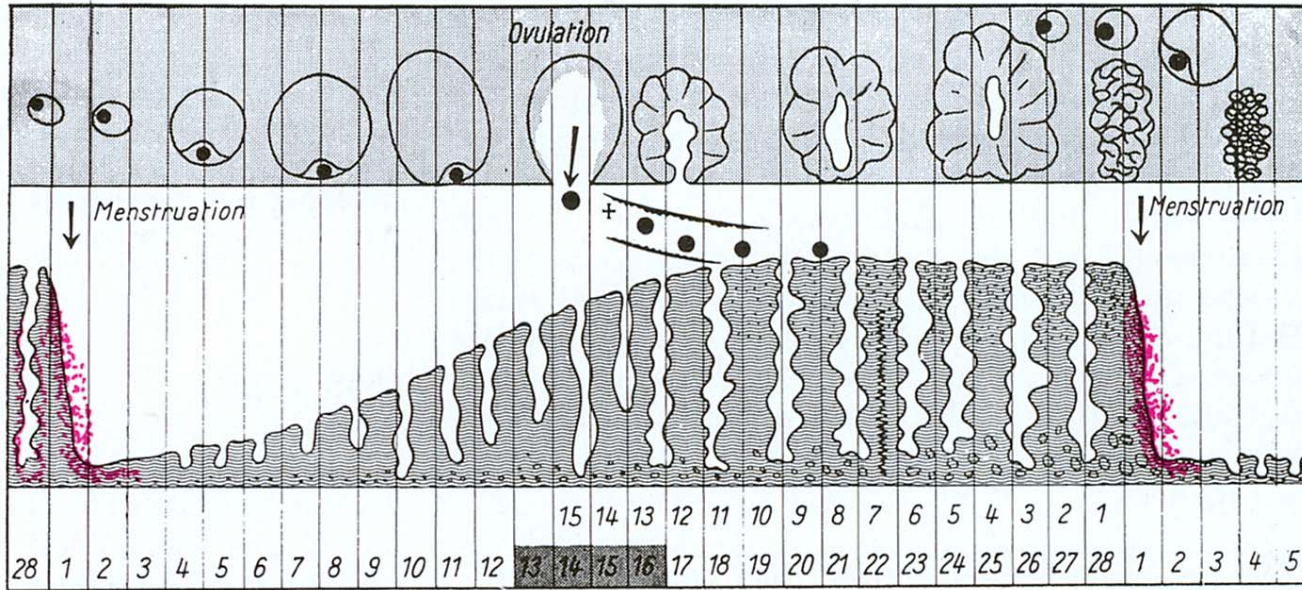
Secretion phase



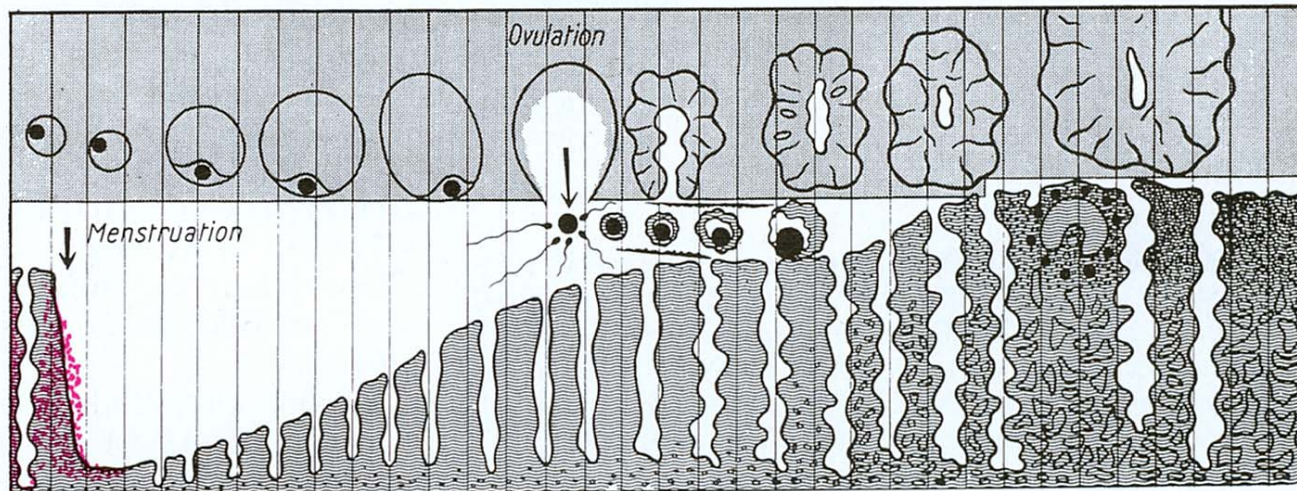
Proliferation phase



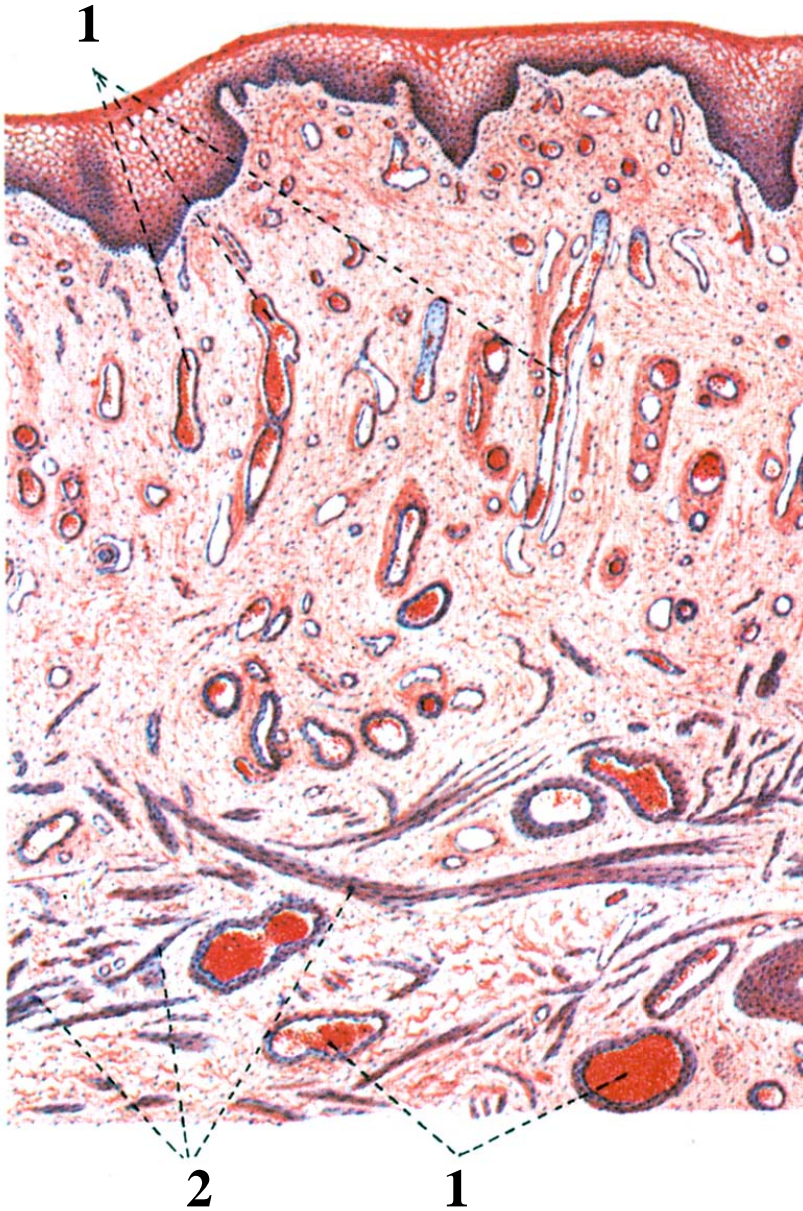
Cycle without fertilization



Cycle with fertilization



VAGINA

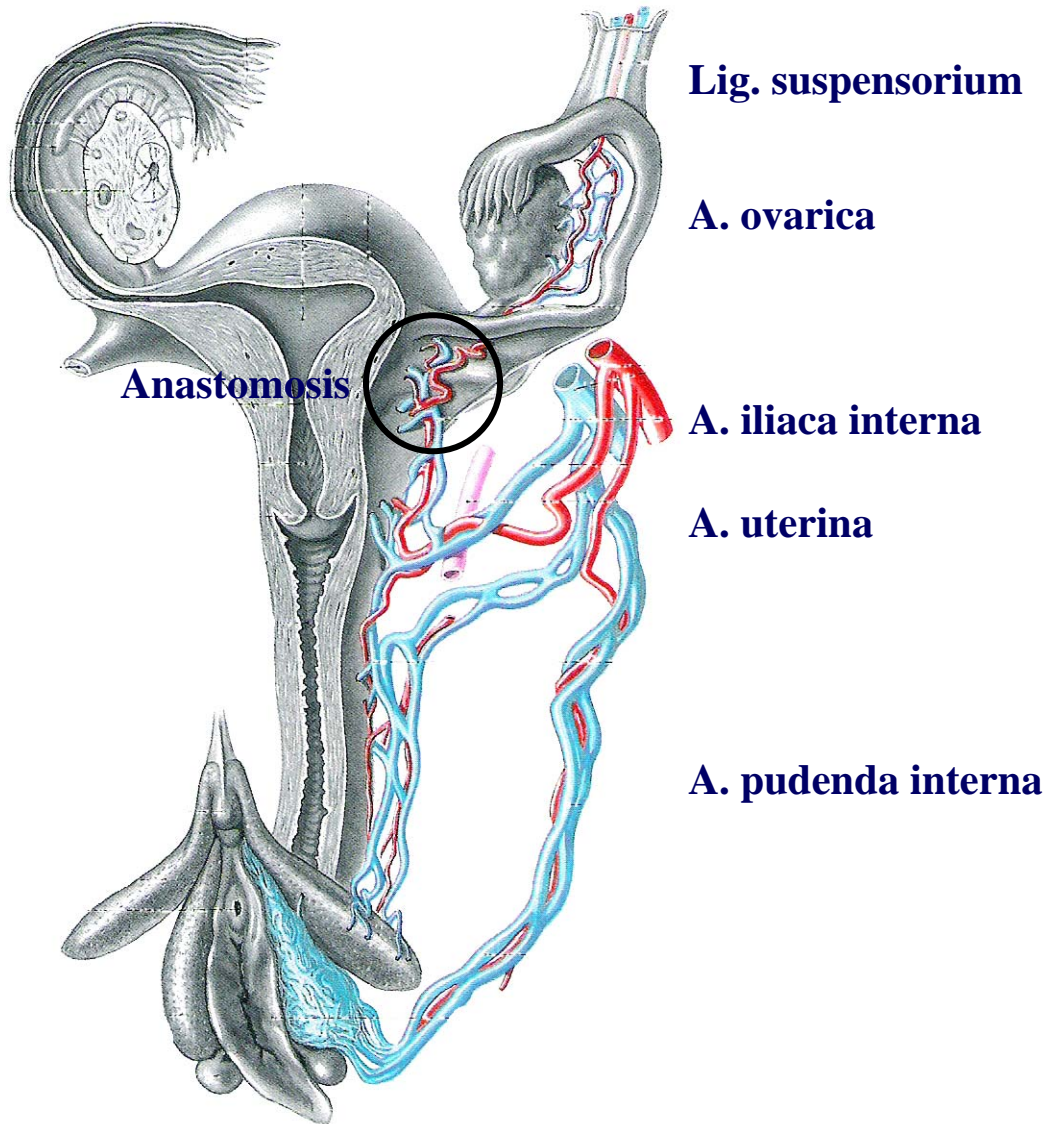


Multi-layered epithelium

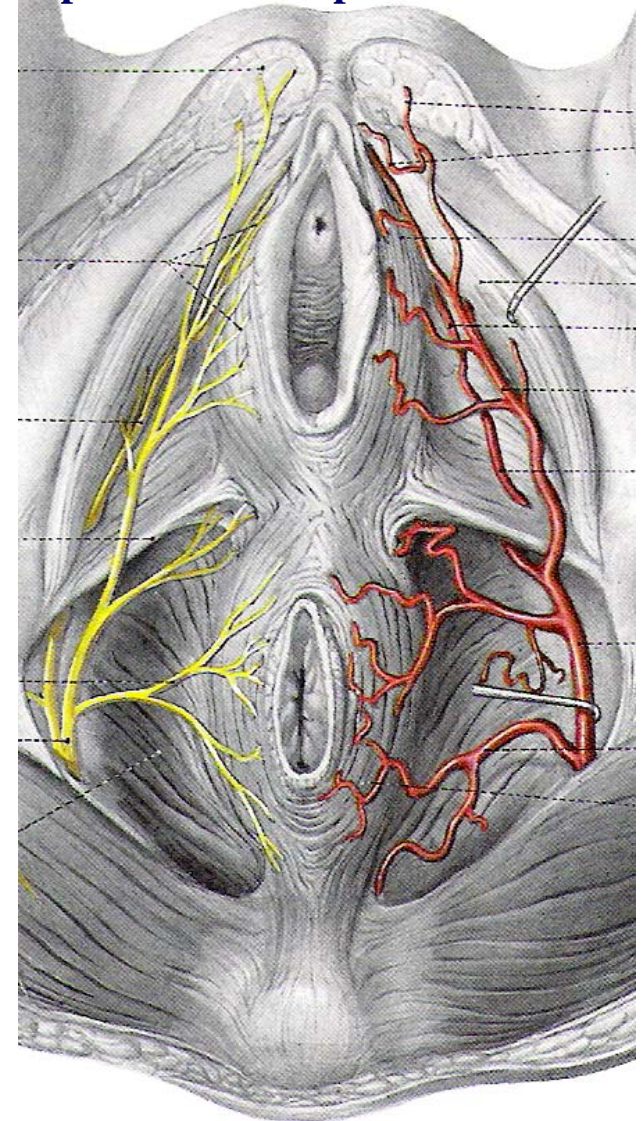
**Lamina propria with
blood vessels (1) and
smooth muscle cells (2)**

FEMALE REPRODUCTIVE ORGANS

BLOOD SUPPLY AND INNERVATION



N. pudendus A. pudenda interna



FEMALE REPRODUCTIVE ORGANS

LIGAMENTA

